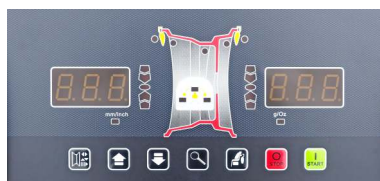


WB300N



POWER SUPPLY:	230V/50Hz
POWER CONSUMPTION:	250 W
MAX. WHEEL WEIGHT	70 kg
RIM DIAMETER:	10" - 24"
RIM WIDTH:	1,5" - 20"
SHAFT DIAMETER:	40 mm
ACCURACY:	1 g
BALANCING TIME:	8 s
NOISE LEVEL:	< 70 dB (A)
WORKING TEMPERATURE:	5-50 °C
WEIGHT:	100 kg
SIZE OF THE PACKAGE:	97x75x120 cm

CONTROL PANEL



STANDARD EQUIPMENT



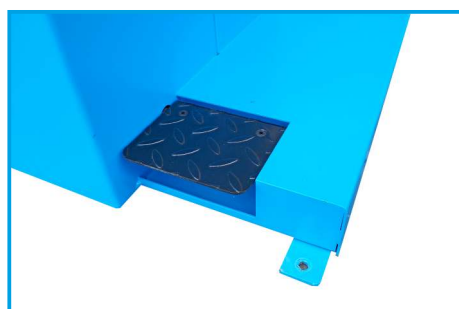
SONAR TO MEASURE THE RIM WIDTH



**AUTOMATIC POSITIONING
WHEELS IN THE PLACE OF UNBALANCE**

Balancing machine designed for balancing passenger car wheels and light truck

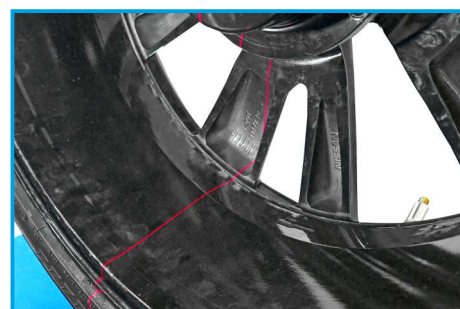
- ♦ automatic wheel distance measurement from balancing machine and rim diameter using a retractable measuring cup
- ♦ automatic wheel width measurement using sonar
- ♦ automatic wheel positioning
- ♦ active protective hood, automatic wheel braking, programs: static, dynamic and ALU
- ♦ electric brake
- ♦ footbrake
- ♦ display on the LEDs
- ♦ quick optimization function, unbalance sharing and hiding weights behind the shoulders of the rim
- ♦ the ability to change units: inch / millimeter and gram / gram, auto-diagnosis and calibration program.



FOOTBRAKE



**LASER INDICATOR AND
WHEEL INTERIOR LIGHTING**



LINE LASER INDICATOR